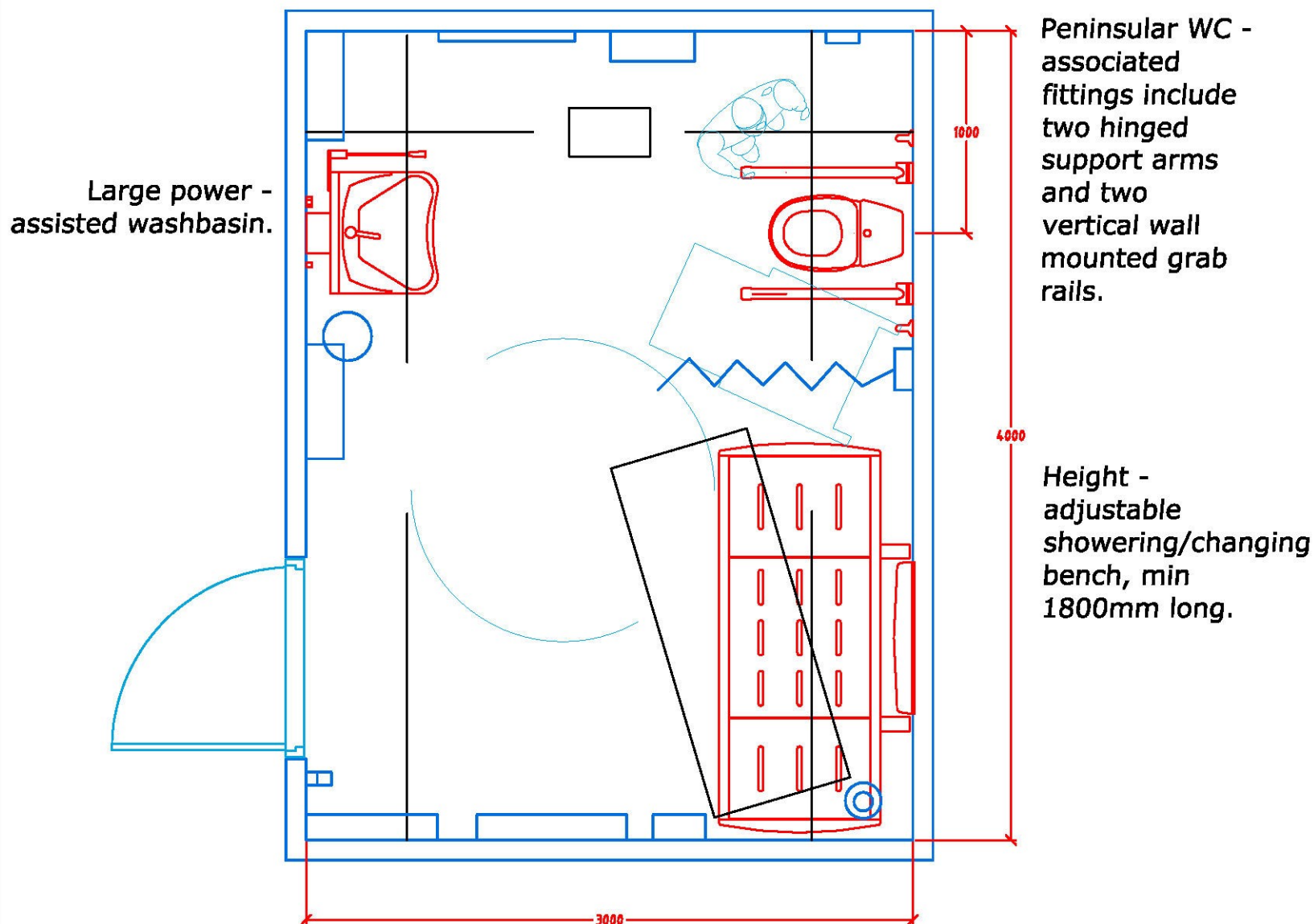


Example Changing Places facility as shown in BS8300:2009 fig 58.



100 Longwater Avenue
 Reading Berkshire
 RG2 6GP
 Tel.: +44 (0)787 984 1720
 email: alo@pressalitcare.com



| | | | |
|----------|----------------------------|--------|-----|
| case | : Changing Places Facility | | |
| | BS8300:2009 | | |
| subject | : Fig 58 | | |
| drawing | : Plan View | | |
| dwg. no. | : 003 | | |
| scale | : | sign : | ALD |
| date | : 16 July 2009 | rev. : | |

Schedule of Pressalit Care Products

16-Jul-09

BS8300:2009 - Fig 58



| No. | Description | Price £ | NBS Guidance |
|---|---|-----------------|-----------------|
| Adjustable wash basin and associated items: | | | |
| 1 R2050000 | Ergonomic wash basin with overflow and tap hole, 600 x 490mm | 280.75 | N13:30,335 |
| 1 RT621 | Tap with long rotatable spout and ring-shaped operating lever | 158.50 | N13:30,335 |
| 1 R4260 | Wash basin bracket, electric motor, lever control, height. adj. 300mm | 1,517.75 | N13:30,335 |
| 1 R2071 | Flexible feed and waste system, feed: 500mm, waste: 700mm | 78.50 | N13:30,335 |
| 1 R2058 | Water trap for waste system | 38.25 | N13:30,335 |
| Associated items with toilet: | | | |
| Part M compliant WC | | | |
| 1 R37xxx-BV3 | Dania toilet seat with cover, BV3 hinge | 77.75 | N13:300 |
| 2 R3148xxx | Support arm, 850mm long, height adjustable, 400mm track | 554.00 | N13:436 |
| 1 R9320 | Toilet roll holder for Pressalit Care support arm | 22.75 | N13:436 |
| 2 RT102xxx | Hand rail 600mm long | 127.50 | N13:436 |
| Height adjustable changing/nursing bench (wall mounted): | | | |
| 1 R8538021 | Nursing bench with electric motor, 1800 mm, incl. Safety rail | 3,638.00 | N13:40,375 |
| Total | | 6,493.75 | (ex VAT) |

'xxx' indicates colour choice, where: 000 = white, 035 = red, 108 = dark blue, and 164 = grey

Quotation Valid for 60 Days

Pressalit Care plc · 100 Longwater Avenue · GreenPark · Reading · Berkshire · RG2 6GP

Phone: 0787 984 1720 Fax: 0844 880 6951

Email: alo@pressalitcare.com



100 Longwater Avenue
Reading Berkshire
RG2 6GP
Tel.: +44 (0)787 984 1720
email: alo@pressalitcare.com

Accessible WC, Shower/Change 4 M x 3 M

Track mounted shower
taps:
can be positioned on
either wall for left/right
sided use (independent/
dependent); or positioned
for use with nursing bench.

Shower hot/cold feeds:
100mm & 150mm from corner
& 340mm from floor.

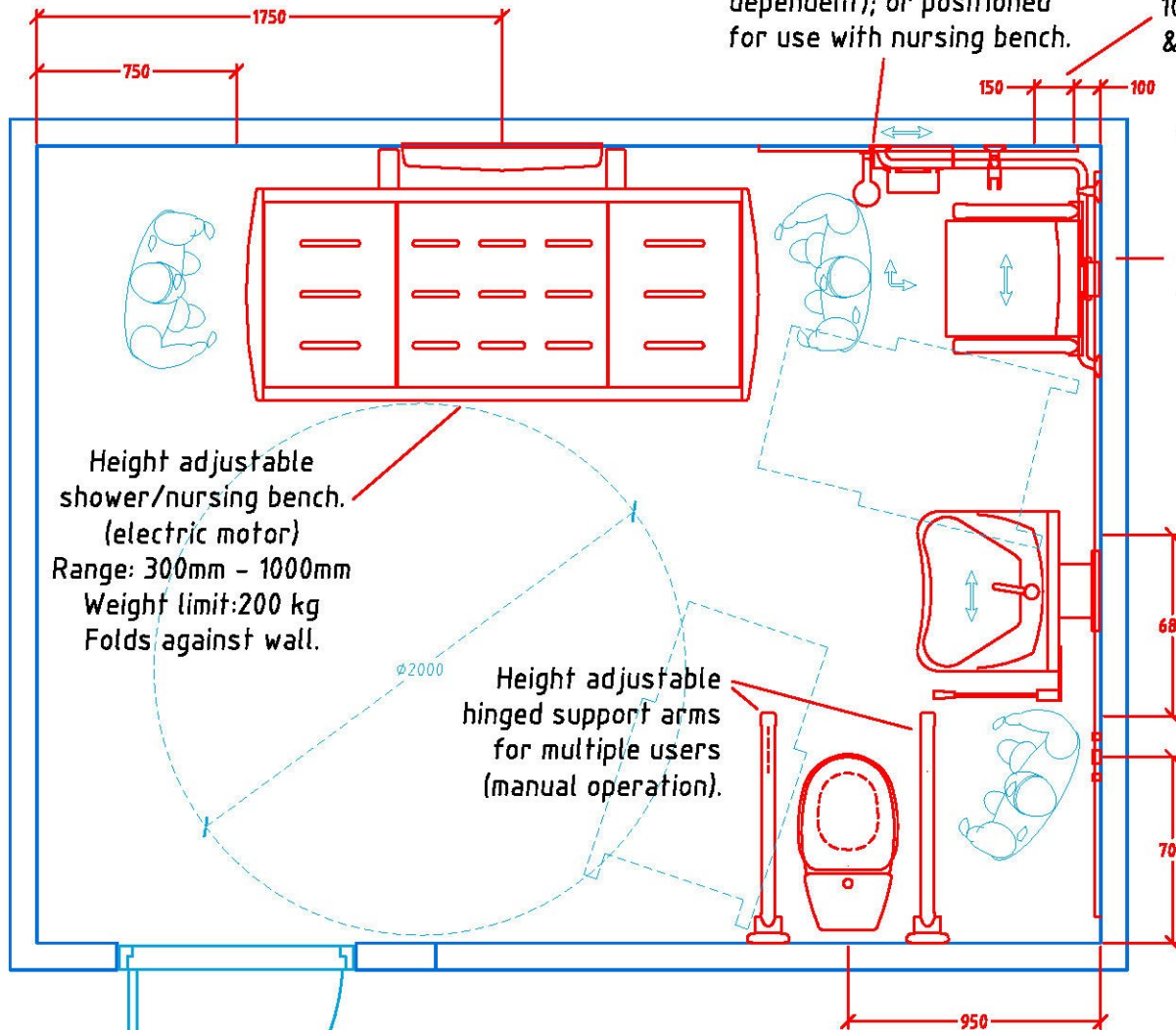
Track mounted shower
chair:
can be positioned on
either wall for left/right
sided use, or away from the
corner to facilitate sufficient
carer space.

Adjustable basin:
680 mm horizontal
movement (manual) &
300 mm vertical
movement (electric
motor).

Basin services:
700 mm from corner
& 340mm from floor.

Height adjustable
shower/nursing bench.
(electric motor)
Range: 300mm - 1000mm
Weight limit: 200 kg
Folds against wall.

Height adjustable
hinged support arms
for multiple users
(manual operation).



| | | | |
|----------|---------------------------------------|--------|-----|
| case | : Changing Places | | |
| | Alternative layout | | |
| subject | : features height adjustable products | | |
| | on horizontal wall track. | | |
| drawing | : Plan View | | |
| dwg. no. | : 001 | | |
| scale | : | sign : | ALO |
| date | : 16 July 2009 | rev. : | |

Schedule of Pressalit Care Products

16-Jul-09

Changing Places - Alternative Layout

DWG - 001



| No. | Description | Price £ | NBS Guidance |
|---|--|-----------------|-----------------|
| Horizontal wall track: | | | |
| 1 R9908 | Track 2700mm long | 186.75 | N13:30,335 |
| 1 R9903 | Track 1200mm long | 100.25 | N13:448 |
| Adjustable wash basin and associated items: | | | |
| 1 R2050000 | Ergonomic wash basin with overflow and tap hole, 600 x 490mm | 280.75 | N13:30,335 |
| 1 RT621 | Tap with long rotatable spout and ring-shaped operating lever | 158.50 | N13:30,335 |
| 1 R4670 | Wash basin bracket, elec. motor, remote control, ht adj. 300mm for h. track | 1,641.00 | N13:30,335 |
| 1 R2074 | Flexible feed and waste system, feed: 1200mm, waste: 1500mm | 97.75 | N13:30,335 |
| 1 R2058 | Water trap for waste system | 38.25 | N13:30,335 |
| 2 RT757 | Track stop | 30.00 | N13:30,335 |
| Associated items with toilet: | | | |
| Part M compliant WC | | | |
| 1 R37xxx-BV3 | Dania toilet seat with cover, BV3 hinge | 77.75 | N13:300 |
| 2 R3148xxx | Support arm, 850mm long, height adjustable, 400mm track | 554.00 | N13:436 |
| 1 R9320 | Toilet roll holder for Pressalit Care support arm | 22.75 | N13:436 |
| Adjustable shower items and fixed grab rails: | | | |
| 1 RT136xxx | Hand rail combination, A:762mm x B:762mm x C:1090mm | 252.50 | N13:436 |
| 1 RT333xxx | Grab rail tube 1090mm, with 1 rosette and 90-degree connection | 91.25 | N13:436 |
| 1 RT600xxx | Showerhead holder, adjustable height | 60.75 | N13:40,375 |
| 1 RT756 | Shower mixer bracket, including 1200mm feed pipes, with quick-release bar | 327.50 | N13:40,375 |
| 1 RT641 | Shower mixer with thermostat and extension grips in smoke coloured plastic | 146.25 | N13:40,375 |
| 1 RT610 | Shower head with normal jet, with hose 2000mm | 53.50 | N13:40,375 |
| 1 R7568xxx | Shower chair 410 w/aperture, b/rest, a/supports, height adj., for h. track | 1,306.25 | N13:448 |
| Opening shower curtain rail for ceiling hoist: | | | |
| 1 RT225 | Shower curtain rail - opening version, 1500x1500mm, incl. 2 x 12 curtain rings | 341.75 | N13:375 |
| 1 RT202000 | Shower curtain, 1500 x 2000 mm, white, 2 singles | 75.25 | N13:375 |
| Shower/nursing bench (wall mounted): | | | |
| 1 R8538021 | Nursing bench with electric motor, 1800 mm, incl. Safety rail | 3,638.00 | N13:40,375 |
| Total | | 9,480.75 | (ex VAT) |

'xxx' indicates colour choice, where: 000 = white, 035 = red, 108 = dark blue, and 164 = grey

Quotation Valid for 60 Days

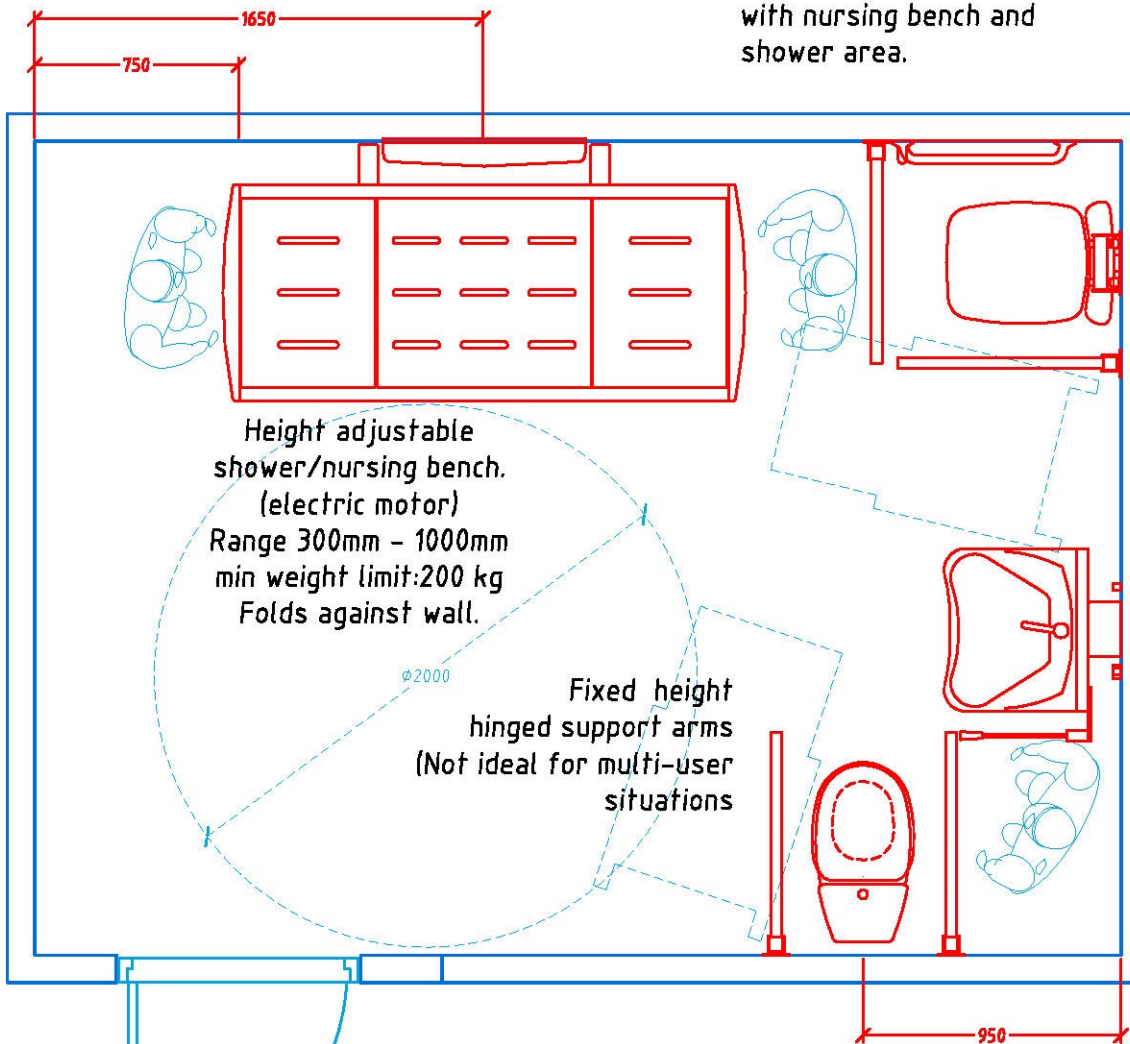
Pressalit Care plc · 100 Longwater Avenue · GreenPark · Reading · Berkshire · RG2 6GP

Phone: 0787 984 1720 Fax: 0844 880 6951

Email: alo@pressalitcare.com

Accessible WC, Shower/Change 4 M x 3 M

Conventional fixed shower
taps:
need to be sited for use
with nursing bench and
shower area.



Conventional fixed shower
seat in Part M arrangement.
Will be either left or right
sided (not both). Not suitable
for dependent use.

Height adjustable
basin:
300 mm vertical
movement (electric
motor).



100 Longwater Avenue
Reading Berkshire
RG2 6GP
Tel.: +44 (0)787 984 1720
email: alo@pressalitcare.com

| | | | |
|----------|--|--------|-----|
| case | : Changing Places | | |
| | Alternative layout | | |
| subject | : features height adjustable and fixed | | |
| | height products. | | |
| drawing | : Plan View | | |
| dwg. no. | : 001A | | |
| scale | : | sign : | ALO |
| date | : 16 July 2009 | rev. : | |

Schedule of Pressalit Care Products

16-Jul-09

Changing Places - Alternative Layout

DWG - 001A



| No. | Description | Price £ | NBS Guidance |
|---|--|-----------------|-----------------|
| Adjustable wash basin and associated items: | | | |
| 1 R2050000 | Ergonomic wash basin with overflow and tap hole, 600 x 490mm | 280.75 | N13:30,335 |
| 1 RT621 | Tap with long rotatable spout and ring-shaped operating lever | 158.50 | N13:30,335 |
| 1 R4260 | Wash basin bracket, electric motor, lever control, height. adj. 300mm | 1,517.75 | N13:30,335 |
| 1 R2071 | Flexible feed and waste system, feed: 500mm, waste: 700mm | 78.50 | N13:30,335 |
| 1 R2058 | Water trap for waste system | 38.25 | N13:30,335 |
| Associated items with toilet: | | | |
| Part M compliant WC | | | |
| 1 R37xxx-BV3 | Dania toilet seat with cover, BV3 hinge | 77.75 | N13:300 |
| 2 R1100000 | Basic support arm, fixed | 193.50 | N13:436 |
| 1 R1151 | Paper holder with spring for support arm | 17.00 | N13:436 |
| Shower items and fixed grab rails: | | | |
| 2 R1100000 | Basic support arm, fixed | 193.50 | N13:436 |
| 2 R1354xxx | Handrail ABS with cover 612mm, coloured | 40.50 | N13:436 |
| 1 R1600000 | Basic folding shower seat | 167.25 | N13:448 |
| 1 R1651000 | Basic back rest for folding shower seat | 85.25 | N13:426 |
| Thermostatic shower mixer also required | | | |
| Opening shower curtain rail for ceiling hoist: | | | |
| 1 RT225 | Shower curtain rail - opening version, 1500x1500mm, incl. 2 x 12 curtain rings | 341.75 | N13:375 |
| 1 RT202000 | Shower curtain, 1500 x 2000 mm, white, 2 singles | 75.25 | N13:375 |
| Shower/nursing bench (wall mounted): | | | |
| 1 R8538021 | Nursing bench with electric motor, 1800 mm, incl. Safety rail | 3,638.00 | N13:40,375 |
| Total | | 6,903.50 | (ex VAT) |

'xxx' indicates colour choice, where: 000 = white, 035 = red, 108 = dark blue, and 164 = grey

Quotation Valid for 60 Days

Pressalit Care plc · 100 Longwater Avenue · GreenPark · Reading · Berkshire · RG2 6GP

Phone: 0787 984 1720 Fax: 0844 880 6951

Email: alo@pressalitcare.com

Accessible WC, Shower/Change 4 M x 3 M

Track mounted shower chair:
can be positioned on either wall for left/right sided use, or away from the corner to facilitate sufficient carer space.

Shower hot/cold feeds:
100mm & 150mm from corner & 340mm from floor.

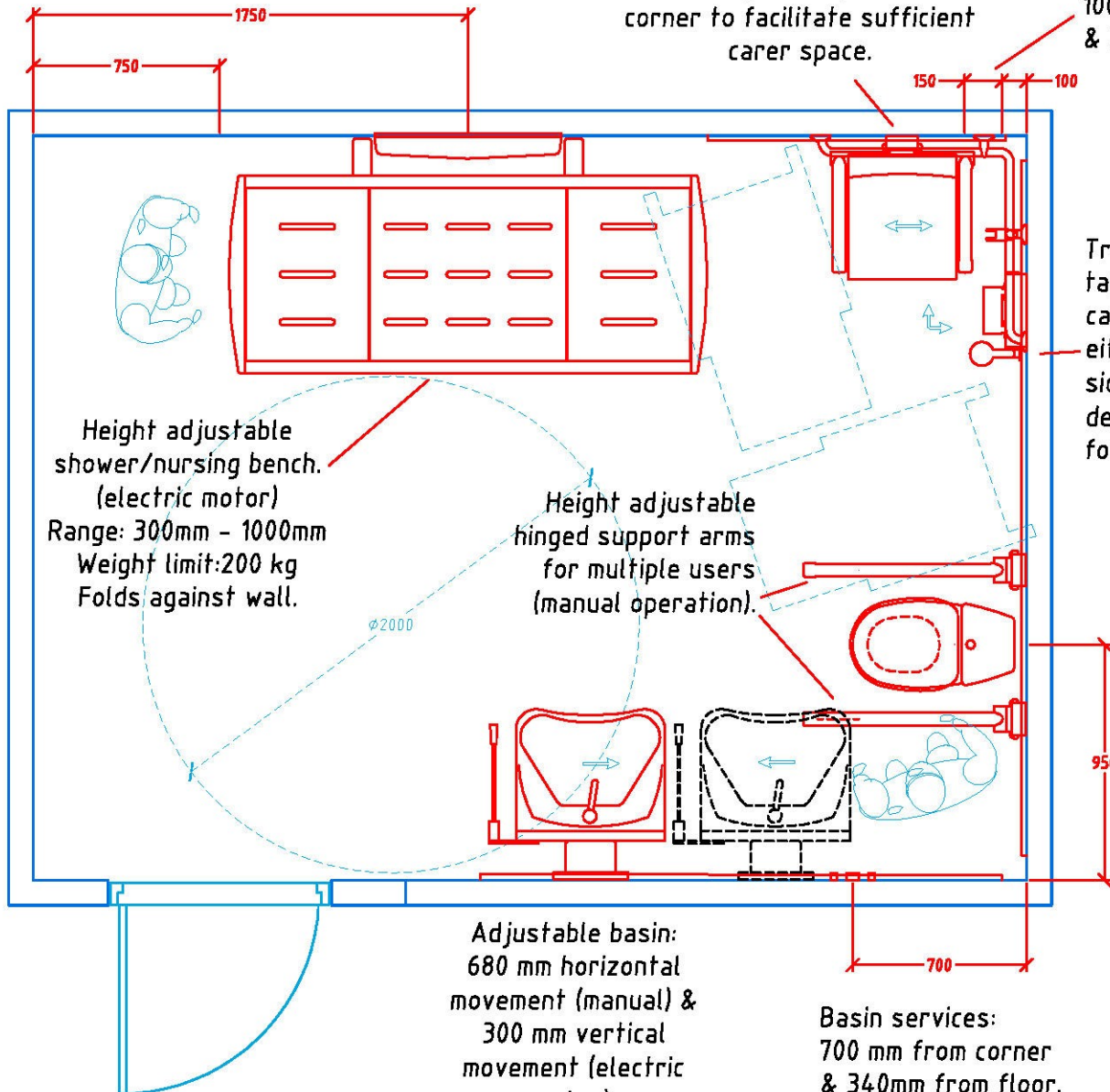
Track mounted shower taps:
can be positioned on either wall for left/right sided use (independent/dependent); or positioned for use with nursing bench.

Height adjustable shower/nursing bench.
(electric motor)
Range: 300mm - 1000mm
Weight limit: 200 kg
Folds against wall.

Height adjustable hinged support arms for multiple users (manual operation).

Adjustable basin:
680 mm horizontal movement (manual) & 300 mm vertical movement (electric motor).

Basin services:
700 mm from corner & 340mm from floor.



100 Longwater Avenue
Reading Berkshire
RG2 6GP
Tel.: +44 (0)787 984 1720
email: alo@pressalitcare.com

| | | | |
|----------|---------------------------------------|--------|-----|
| case | : Changing Places | | |
| | Alternative layout | | |
| subject | : features height adjustable products | | |
| | on horizontal track | | |
| drawing | : Plan View | | |
| dwg. no. | : 002 | | |
| scale | : | sign : | ALO |
| date | : 16 July 2009 | rev. : | |

Schedule of Pressalit Care Products

16-Jul-09

Changing Places - Alternative Layout

DWG - 002



| No. | Description | Price £ | NBS Guidance |
|---|--|-----------------|-----------------|
| Horizontal wall track: | | | |
| 1 R9908 | Track 2700mm long | 186.75 | N13:436 |
| 1 R9906 | Track 2100mm long | 151.25 | N13:30,335 |
| 1 R9903 | Track 1200mm long | 100.25 | N13:448 |
| Adjustable wash basin and associated items: | | | |
| 1 R2050000 | Ergonomic wash basin with overflow and tap hole, 600 x 490mm | 280.75 | N13:30,335 |
| 1 RT621 | Tap with long rotatable spout and ring-shaped operating lever | 158.50 | N13:30,335 |
| 1 R4670 | Wash basin bracket, elec. motor, remote control, ht adj. 300mm for h. track | 1,641.00 | N13:30,335 |
| 1 R2074 | Flexible feed and waste system, feed: 1200mm, waste: 1500mm | 97.75 | N13:30,335 |
| 1 R2058 | Water trap for waste system | 38.25 | N13:30,335 |
| 2 RT757 | Track stop | 30.00 | N13:30,335 |
| Associated items with toilet: | | | |
| Part M compliant WC | | | |
| 1 R37xxx-BV3 | Dania toilet seat with cover, BV3 hinge | 77.75 | N13:300 |
| 2 R3548xxx | Support arm, 850mm, hght. adj., for mounting on horizontal track | 737.50 | N13:436 |
| 1 R9320 | Toilet roll holder for Pressalit Care support arm | 22.75 | N13:436 |
| Adjustable shower items and fixed grab rails: | | | |
| 1 RT136xxx | Hand rail combination, A:762mm x B:762mm x C:1090mm | 252.50 | N13:436 |
| 1 RT333xxx | Grab rail tube 1090mm, with 1 rosette and 90-degree connection | 91.25 | N13:436 |
| 1 RT600xxx | Showerhead holder, adjustable height | 60.75 | N13:40,375 |
| 1 RT756 | Shower mixer bracket, including 1200mm feed pipes, with quick-release bar | 327.50 | N13:40,375 |
| 1 RT641 | Shower mixer with thermostat and extension grips in smoke coloured plastic | 146.25 | N13:40,375 |
| 1 RT610 | Shower head with normal jet, with hose 2000mm | 53.50 | N13:40,375 |
| 1 R7568xxx | Shower chair 410 w/aperture, b/rest, a/supports, height adj., for h. track | 1,306.25 | N13:448 |
| Opening shower curtain rail for ceiling hoist: | | | |
| 1 RT225 | Shower curtain rail - opening version, 1500x1500mm, incl. 2 x 12 curtain rings | 341.75 | N13:375 |
| 1 RT202000 | Shower curtain, 1500 x 2000 mm, white, 2 singles | 75.25 | N13:375 |
| Shower/nursing bench (wall mounted): | | | |
| 1 R8538021 | Nursing bench with electric motor, 1800 mm, incl. Safety rail | 3,638.00 | N13:40,375 |
| Total | | 9,815.50 | (ex VAT) |

'xxx' indicates colour choice, where: 000 = white, 035 = red, 108 = dark blue, and 164 = grey

Quotation Valid for 60 Days

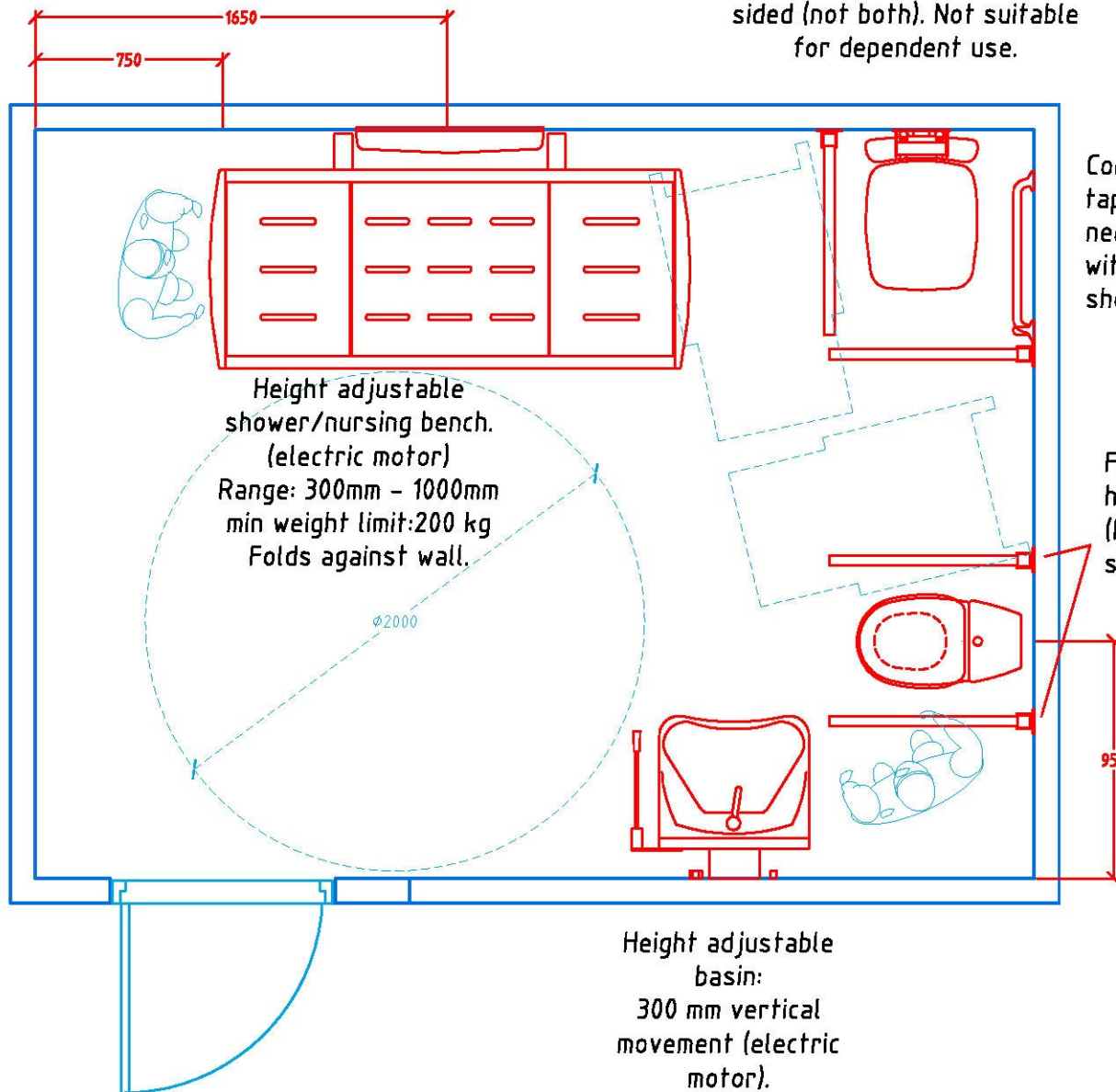
Pressalit Care plc · 100 Longwater Avenue · GreenPark · Reading · Berkshire · RG2 6GP

Phone: 0787 984 1720 Fax: 0844 880 6951

Email: alo@pressalitcare.com

Accessible WC, Shower/Change 4 M x 3 M

Conventional fixed shower
seat in Part M arrangement.
Will be either left or right
sided (not both). Not suitable
for dependent use.



Conventional fixed shower
taps:
need to be sited for use
with nursing bench and
shower area.

Fixed height
hinged support arms
(Not ideal for multi-user
situations)

Height adjustable
basin:
300 mm vertical
movement (electric
motor).



100 Longwater Avenue
Reading Berkshire
RG2 6GP
Tel.: +44 (0)787 984 1720
email: alo@pressalitcare.com

| | | | |
|----------|---|--------------|-----|
| case | : Changing Places | | |
| | Alternative layout | | |
| subject | : features height adjustable and fixed height products. | | |
| drawing | : Plan View | | |
| dwg. no. | : 002A | | |
| scale | : | sign : | ALO |
| date | : | rev. : | |
| | : | 16 July 2009 | |

Schedule of Pressalit Care Products

16-Jul-09

Changing Places - Alternative Layout

DWG - 002A



| No. | Description | Price £ | NBS Guidance |
|---|--|-----------------|-----------------|
| Adjustable wash basin and associated items: | | | |
| 1 R2050000 | Ergonomic wash basin with overflow and tap hole, 600 x 490mm | 280.75 | N13:30,335 |
| 1 RT621 | Tap with long rotatable spout and ring-shaped operating lever | 158.50 | N13:30,335 |
| 1 R4260 | Wash basin bracket, electric motor, lever control, height. adj. 300mm | 1,517.75 | N13:30,335 |
| 1 R2071 | Flexible feed and waste system, feed: 500mm, waste: 700mm | 78.50 | N13:30,335 |
| 1 R2058 | Water trap for waste system | 38.25 | N13:30,335 |
| Associated items with toilet: | | | |
| Part M compliant WC | | | |
| 1 R37xxx-BV3 | Dania toilet seat with cover, BV3 hinge | 77.75 | N13:300 |
| 2 R1100000 | Basic support arm, fixed | 193.50 | N13:436 |
| 1 R1151 | Paper holder with spring for support arm | 17.00 | N13:436 |
| Shower items and fixed grab rails: | | | |
| 2 R1100000 | Basic support arm, fixed | 193.50 | N13:436 |
| 2 R1354xxx | Handrail ABS with cover 612mm, coloured | 40.50 | N13:436 |
| 1 R1600000 | Basic folding shower seat | 167.25 | N13:448 |
| 1 R1651000 | Basic back rest for folding shower seat | 85.25 | N13:426 |
| Thermostatic shower mixer also required | | | |
| Opening shower curtain rail for ceiling hoist: | | | |
| 1 RT225 | Shower curtain rail - opening version, 1500x1500mm, incl. 2 x 12 curtain rings | 341.75 | N13:375 |
| 1 RT202000 | Shower curtain, 1500 x 2000 mm, white, 2 singles | 75.25 | N13:375 |
| Shower/nursing bench (wall mounted): | | | |
| 1 R8538021 | Nursing bench with electric motor, 1800 mm, incl. Safety rail | 3,638.00 | N13:40,375 |
| Total | | 6,903.50 | (ex VAT) |

'xxx' indicates colour choice, where: 000 = white, 035 = red, 108 = dark blue, and 164 = grey

Quotation Valid for 60 Days

Pressalit Care plc · 100 Longwater Avenue · GreenPark · Reading · Berkshire · RG2 6GP

Phone: 0787 984 1720 Fax: 0844 880 6951

Email: alo@pressalitcare.com